



**Please note that Cypress is an Infineon Technologies Company.**

The document following this cover page is marked as “Cypress” document as this is the company that originally developed the product. Please note that Infineon will continue to offer the product to new and existing customers as part of the Infineon product portfolio.

**Continuity of document content**

The fact that Infineon offers the following product as part of the Infineon product portfolio does not lead to any changes to this document. Future revisions will occur when appropriate, and any changes will be set out on the document history page.

**Continuity of ordering part numbers**

Infineon continues to support existing part numbers. Please continue to use the ordering part numbers listed in the datasheet for ordering.

# PSoC<sup>®</sup> Creator<sup>™</sup> Quick Start Guide



## Install

Download PSoC Creator from [www.cypress.com/psoccreator](http://www.cypress.com/psoccreator), or install from a kit CD.

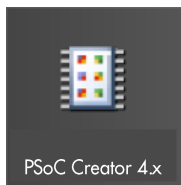
For assistance, go to <http://www.cypress.com/go/support>

For features, system requirements, and installation notes, refer to the Release Notes available at: <http://www.cypress.com/products/psoc-creator-integrated-design-environment-ide>.

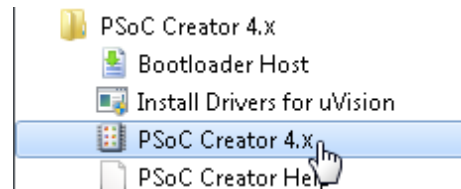
## Launch

Find the **PSoC Creator** icon to launch the tool.

Windows<sup>®</sup> 8 or above



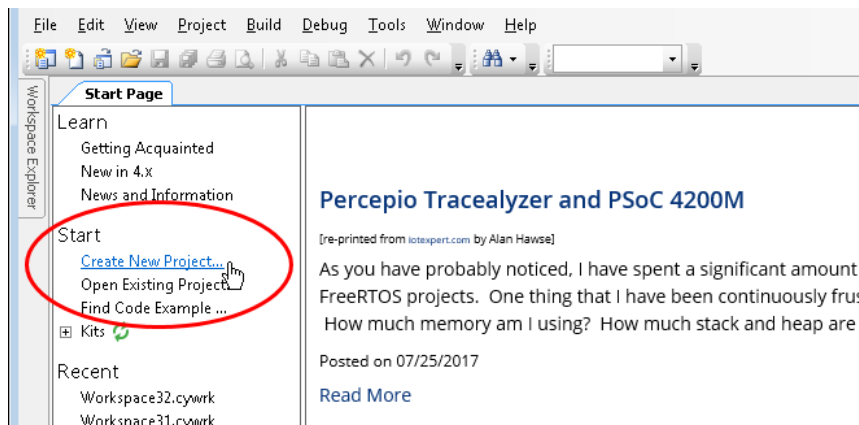
Windows 7 or before



You can launch the tool from the Installer application. You can also use the Windows Start key and type "PSoC Creator" to locate it.

## Create New Project

Click the **Create New Project** link on the Start Page to open the New Project wizard.



**Note** There are also code examples available from a link on the Start Page and from the **File** menu.

## Complete New Project Wizard

Follow the instructions on the New Project wizard to select/complete information needed for your project. This wizard provides several options to create projects from code examples and pre-populated schematics.

Select a Target kit if it is installed, or select a specific Target module or Target device. Then click **Next >**.

Select Code example and click **Next >**.

Select an example from the list and click **Next >**.

Click **Finish** to create the project.

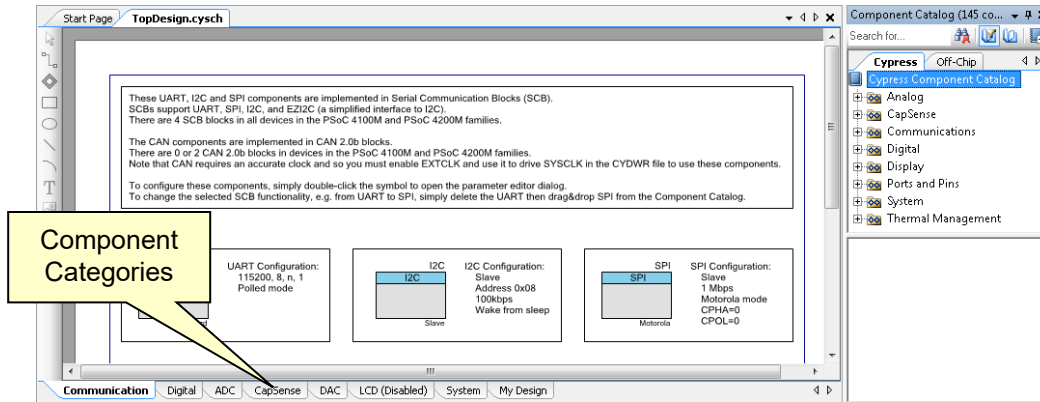
**Note** For PSoC 6 devices, the Target IDEs page displays to select one or more IDEs for which to generate files. See also [Optional: 3rd Party IDE Integration](#) in this document.

For more information, refer to the PSoC Creator Help topic “Creating a New Project.” Also, each code example project contains a description document.

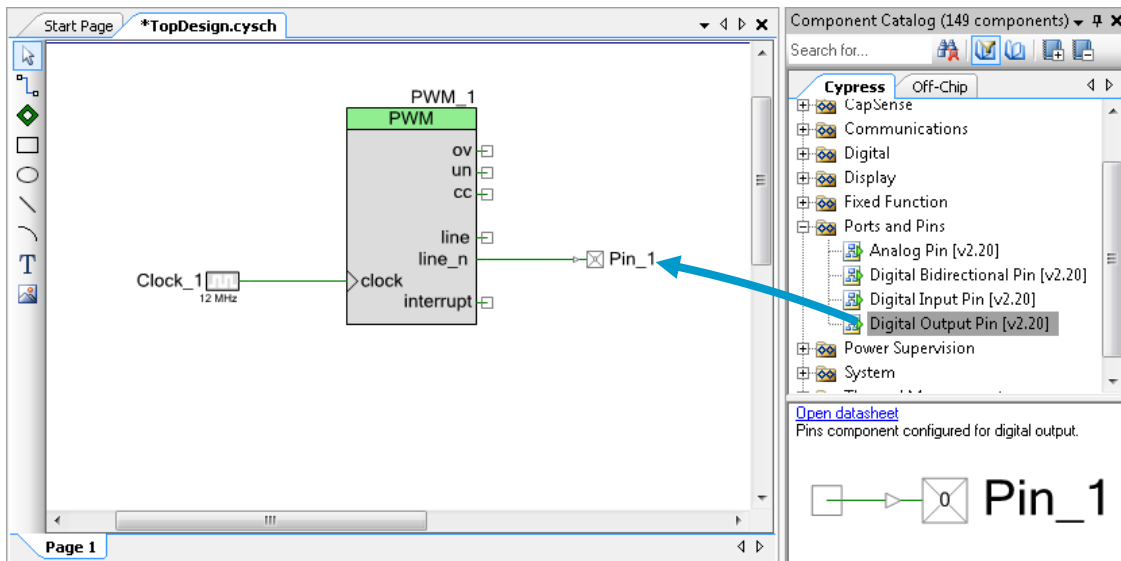
## Modify the Design

As needed, you can add components and functionality to modify the design to fit your needs.

For PSoC 4xxx devices, pre-populated schematics contain preconfigured Components to use in your design. Components are divided into separate categories by schematic tabs. There is a "My Design" tab to customize your design. You can disable individual Components or disable complete schematic tabs.



As needed, add a Pin, Clock, and other Components to complete the design by dragging items from the Component Catalog.



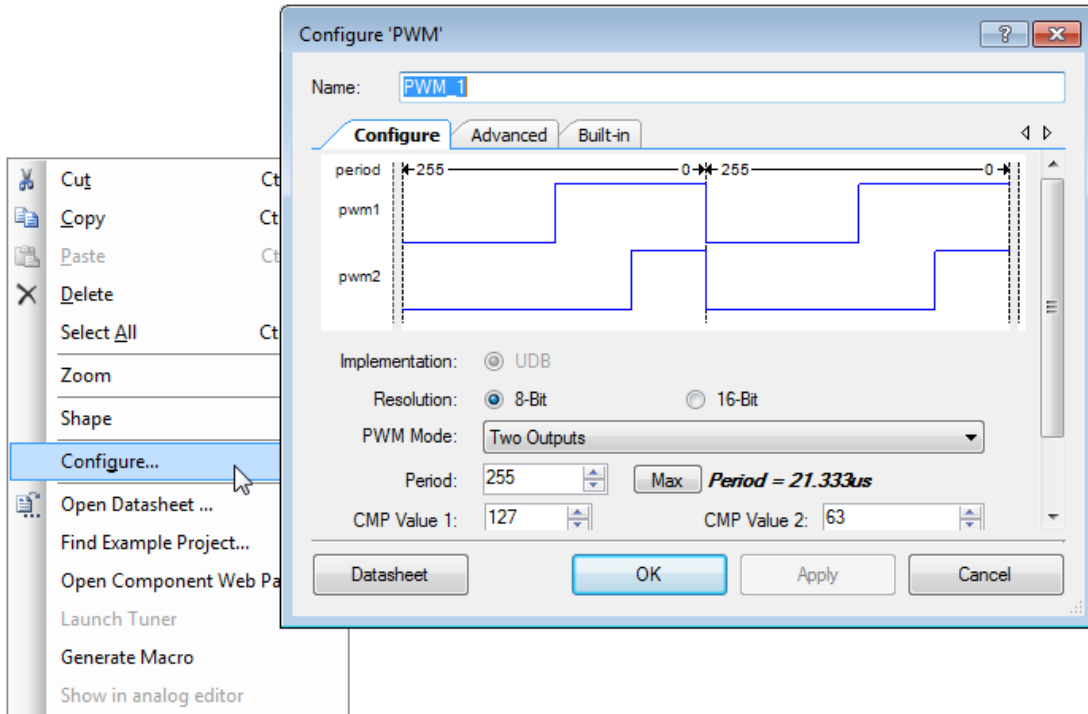
If needed, connect various components using the Wire tool. 

If you have complex or frequent wiring, double-click the wire tool to enable "Sticky" mode to use it repeatedly. Then press **[Esc]** to return to "Normal" mode.

For more information, refer to the PSoC Creator Help topic "Schematic Editor."

## Configure Components

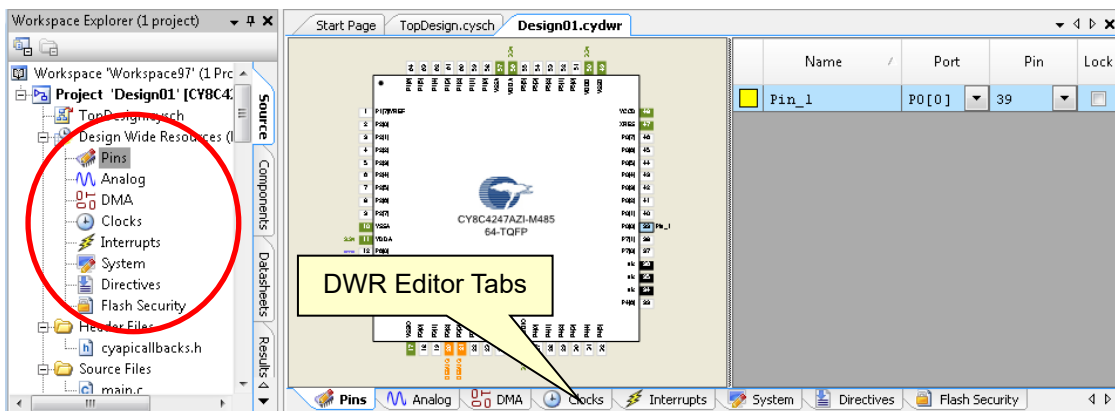
As needed, configure various component parameters to modify the behavior.



For more information, refer to each component's datasheet, available from the Configure dialog, the Component Catalog, or from the **Datasheets** tab in the Workspace Explorer.

## Configure Design-Wide Resources

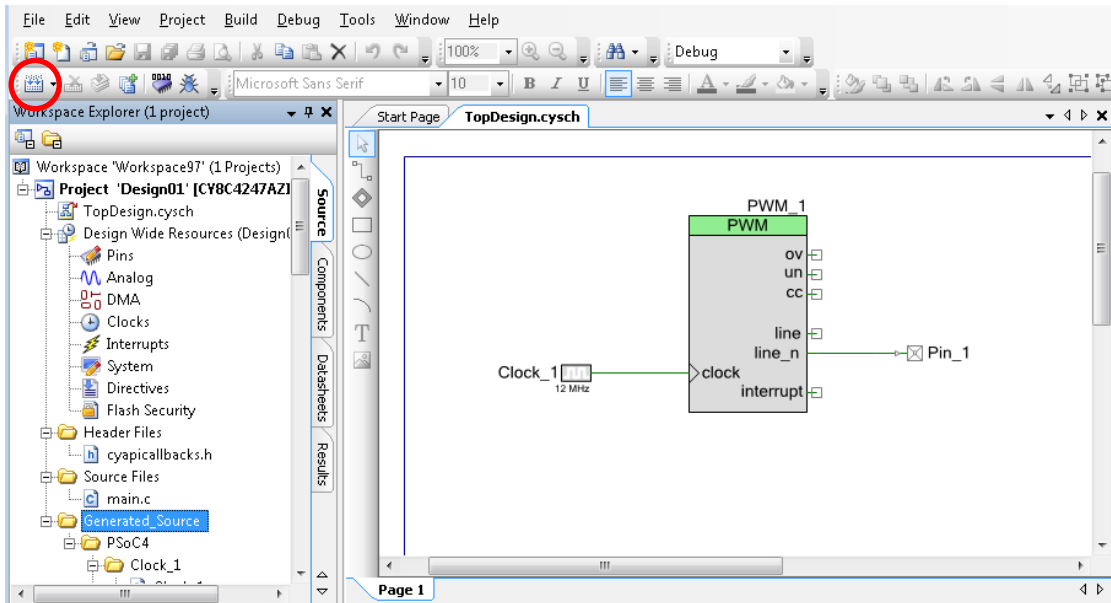
Double-click on a node in the Workspace Explorer to open Design-Wide Resources, such as pins, clocks, interrupts, DMA, and more. Once open, use the tabs to switch between them.



For more information, refer to the PSoc Creator Help topic “Design-Wide Resources.”

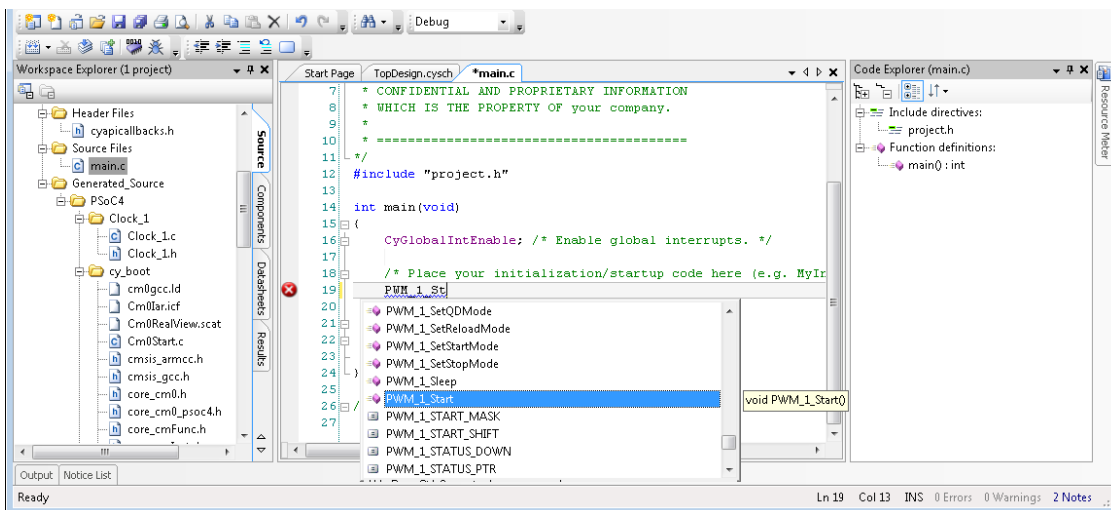
## Build the Design

After completing the design, use the **Build**  command to generate source code.



For more information about these files, refer to the *System Reference Guide*, located on the **Help** menu, under **Documentation**.

## Add Code in PSoC Creator




Inside PSoC Creator, open the *main.c* file and insert the necessary code for your application.

**Note** For many components, you must add at least a start function to enable the component. This start function is usually named [component\_instance\_name]\_Start(). For more information, refer to the applicable Component datasheet API section.

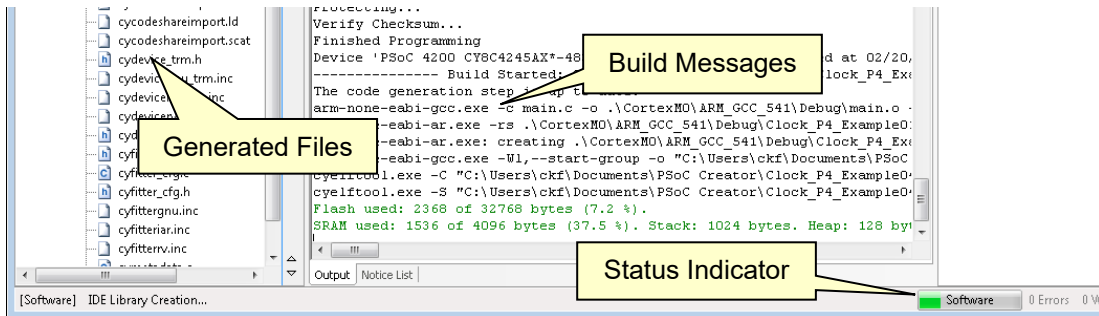
Cypress provides various PSoC Creator code example projects that can help you design faster. Open the Code Example dialog from the **File** menu or Start Page. For more information, refer to the PSoC Creator Help topic “Find Code Example.”

## Program the Device

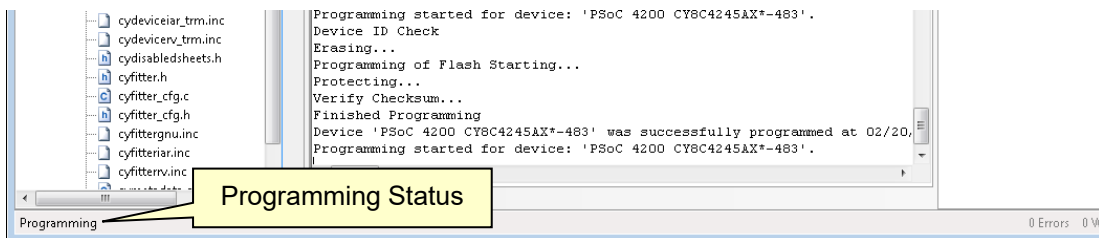
Connect your development kit to your computer, and click **Program** 

You can obtain a kit from the Cypress web page at: <http://www.cypress.com/go/store>.

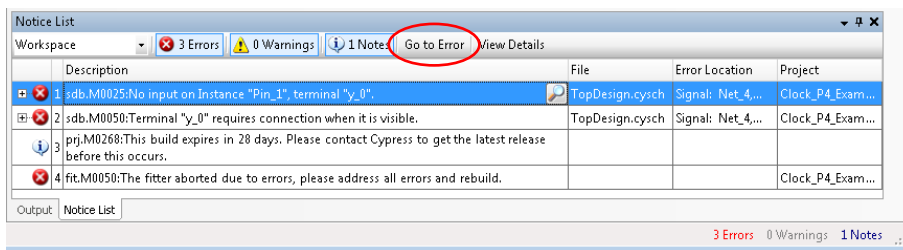
If your design has no errors, PSoC Creator will build the design ...



... and program the device.



If there are errors, view the Notice List window and click **Go To Error** to find and resolve them.



## Next Steps

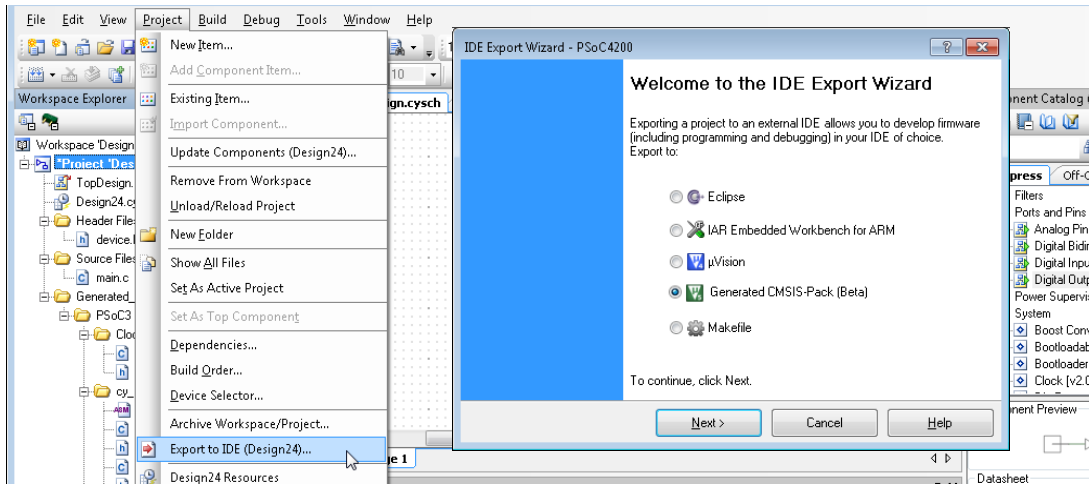
Now that you have created a design, open a few example projects and explore different ways to improve it. The PSoC Creator Help and various documents are available from the **Help** menu.

Refer also to the [PSoC Creator](http://www.cypress.com/go/store) web page for more information, such as design guides, application notes, and training videos.

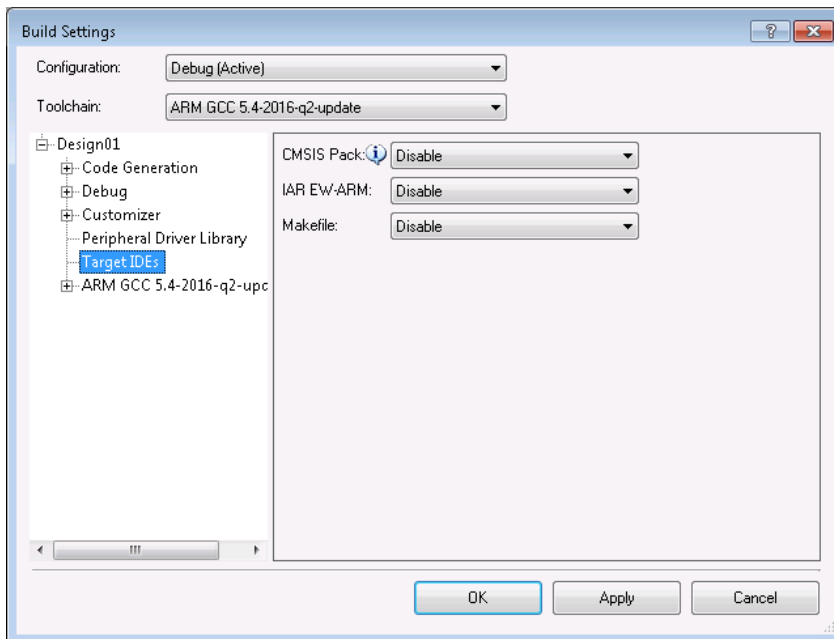
### Optional: 3<sup>rd</sup> Party IDE Integration

If preferred, you can use your PSoC Creator design with a 3<sup>rd</sup> Party IDE to code, debug, and test firmware.

**For PSoC 3, PSoC 4, PSoC 5LP, and FM0+ devices**, select **Export to IDE** from the **Project** menu to open the IDE Export Wizard.



**For PSoC 6 devices**, this step is included as part of creating a new design. You can also select **Build Settings** from the **Project** menu, and then select **Target IDEs**.



Refer to the PSoC Creator Help topic “Integrating into 3rd Party IDEs” for full details.



© Cypress Semiconductor Corporation, 2010-2019. This document is the property of Cypress Semiconductor Corporation and its subsidiaries, including Spansion LLC ("Cypress"). This document, including any software or firmware included or referenced in this document ("Software"), is owned by Cypress under the intellectual property laws and treaties of the United States and other countries worldwide. Cypress reserves all rights under such laws and treaties and does not, except as specifically stated in this paragraph, grant any license under its patents, copyrights, trademarks, or other intellectual property rights. If the Software is not accompanied by a license agreement and you do not otherwise have a written agreement with Cypress governing the use of the Software, then Cypress hereby grants you a personal, non-exclusive, nontransferable license (without the right to sublicense) (1) under its copyright rights in the Software (a) for Software provided in source code form, to modify and reproduce the Software solely for use with Cypress hardware products, only internally within your organization, and (b) to distribute the Software in binary code form externally to end users (either directly or indirectly through resellers and distributors), solely for use on Cypress hardware product units, and (2) under those claims of Cypress's patents that are infringed by the Software (as provided by Cypress, unmodified) to make, use, distribute, and import the Software solely for use with Cypress hardware products. Any other use, reproduction, modification, translation, or compilation of the Software is prohibited.

TO THE EXTENT PERMITTED BY APPLICABLE LAW, CYPRESS MAKES NO WARRANTY OF ANY KIND, EXPRESS OR IMPLIED, WITH REGARD TO THIS DOCUMENT OR ANY SOFTWARE OR ACCOMPANYING HARDWARE, INCLUDING, BUT NOT LIMITED TO, THE IMPLIED WARRANTIES OF MERCHANTABILITY AND FITNESS FOR A PARTICULAR PURPOSE. To the extent permitted by applicable law, Cypress reserves the right to make changes to this document without further notice. Cypress does not assume any liability arising out of the application or use of any product or circuit described in this document. Any information provided in this document, including any sample design information or programming code, is provided only for reference purposes. It is the responsibility of the user of this document to properly design, program, and test the functionality and safety of any application made of this information and any resulting product. Cypress products are not designed, intended, or authorized for use as critical components in systems designed or intended for the operation of weapons, weapons systems, nuclear installations, life-support devices or systems, other medical devices or systems (including resuscitation equipment and surgical implants), pollution control or hazardous substances management, or other uses where the failure of the device or system could cause personal injury, death, or property damage ("Unintended Uses"). A critical component is any component of a device or system whose failure to perform can be reasonably expected to cause the failure of the device or system, or to affect its safety or effectiveness. Cypress is not liable, in whole or in part, and you shall and hereby do release Cypress from any claim, damage, or other liability arising from or related to all Unintended Uses of Cypress products. You shall indemnify and hold Cypress harmless from and against all claims, costs, damages, and other liabilities, including claims for personal injury or death, arising from or related to any Unintended Uses of Cypress products.

Cypress, the Cypress logo, Spansion, the Spansion logo, and combinations thereof, WICED, PSoC, CapSense, EZ-USB, F-RAM, and Traveo are trademarks or registered trademarks of Cypress in the United States and other countries. For a more complete list of Cypress trademarks, visit [cypress.com](http://cypress.com). Other names and brands may be claimed as property of their respective owners.